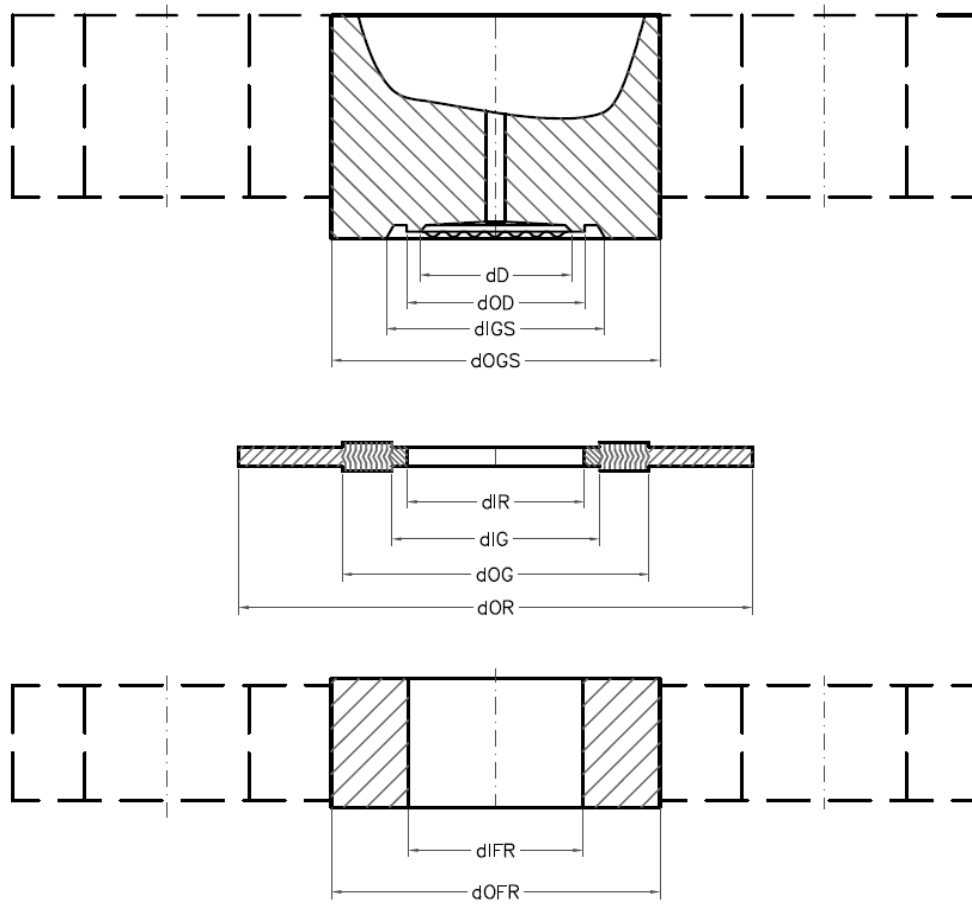


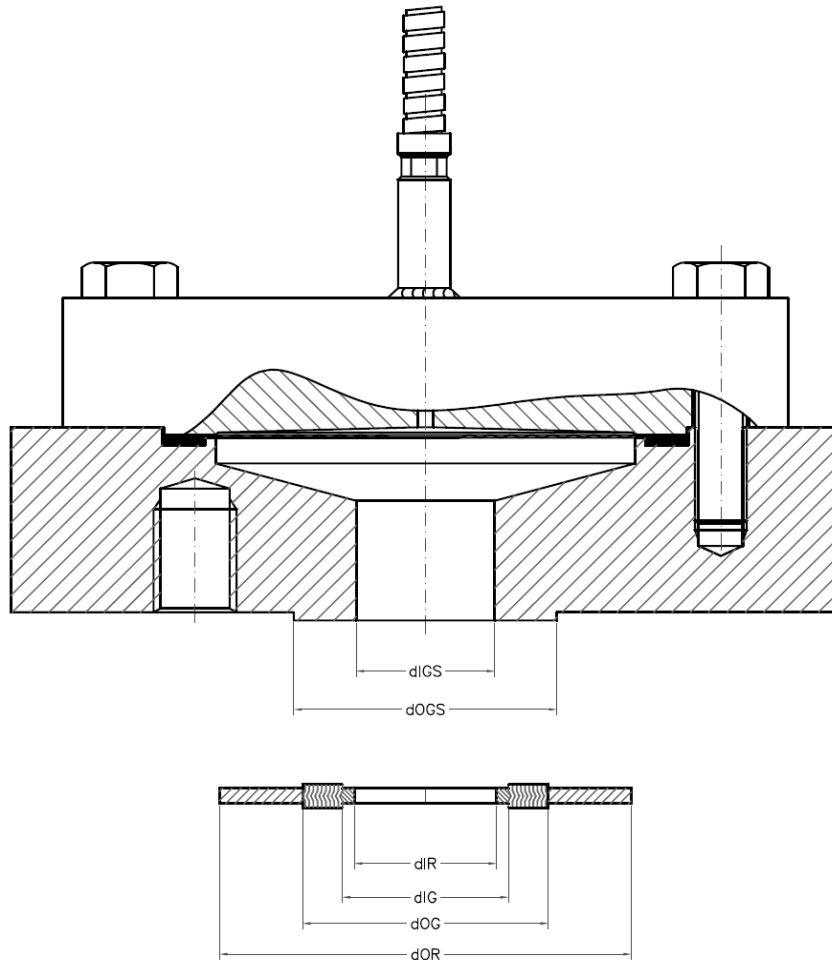
Spiral Gasket – BF

flange size	flange range	d _C	d _{IFR}	d _{IR}	d _D	d _{IGS}	d _{IG}	d _{OG}	d _{OFR}	d _{OGS}	d _{OR}
1"	cl. 150	23.5	26.6	26.9	27.5	31.8	31.8	47.8	50.8	50.8	66.8
1"	cl. 300	23.5	26.6	26.9	27.5	31.8	31.8	47.8	50.8	50.8	73.2
1"	cl. 400-600	23.5	26.6	26.9	27.5	31.8	31.8	47.8	50.8	50.8	73.2
1"	cl. 900-1500	23.5	26.6	26.9	27.5	31.8	31.8	47.8	50.8	50.8	79.5
1"	cl. 2500	23.5	26.6	26.9	27.5	31.8	31.8	47.8	50.8	50.8	85.9
1.25"	cl. 150	32.0	35.1	38.1	35.7	41.5	47.8	60.5	63.5	63.5	76.2
1.25"	cl. 300	32.0	35.1	38.1	35.7	41.5	47.8	60.5	63.5	63.5	82.6
1.25"	cl. 400-600	32.0	35.1	38.1	35.7	41.5	47.8	60.5	63.5	63.5	82.6
1.25"	cl. 900-1500	32.0	35.1	33.3	35.7	39.8	39.6	60.5	63.5	63.5	88.9
1.25"	cl. 2500	32.0	35.1	33.3	35.7	39.8	39.6	60.5	63.5	63.5	104.9
1.5"	cl. 150	44.0	40.9	44.5	47.3	52.4	54.1	69.9	73.0	73.0	85.9
1.5"	cl. 300	44.0	40.9	44.5	47.3	52.4	54.1	69.9	73.0	73.0	95.3
1.5"	cl. 400-600	44.0	40.9	44.5	47.3	52.4	54.1	69.9	73.0	73.0	95.3
1.5"	cl. 900-1500	32.0	40.9	41.4	35.7	41.5	47.8	69.9	73.0	73.0	98.6
1.5"	cl. 2500	32.0	40.9	41.4	35.7	41.5	47.8	69.9	73.0	73.0	117.6
2"	cl. 150	57.0	52.5	55.6	63.5	70.2	69.9	85.9	92.1	92.1	104.9
2"	cl. 300	57.0	52.5	55.6	63.5	70.2	69.9	85.9	92.1	92.1	111.3
2"	cl. 400-600	57.0	52.5	55.6	63.5	70.2	69.9	85.9	92.1	92.1	111.3
2"	cl. 900-1500	44.0	52.5	52.3	47.3	55.4	58.7	85.9	92.1	92.1	143.0
2"	cl. 2500	44.0	52.5	52.3	47.3	55.4	58.7	85.9	92.1	92.1	146.1
2.5"	cl. 150	57.0	62.7	66.5	63.5	70.2	82.6	98.6	104.8	104.8	124.0
2.5"	cl. 300	57.0	62.7	66.5	63.5	70.2	82.6	98.6	104.8	104.8	130.3
2.5"	cl. 400-600	57.0	62.7	66.5	63.5	70.2	82.6	98.6	104.8	104.8	130.3
2.5"	cl. 900-1500	57.0	62.7	63.5	63.5	70.2	69.9	98.6	104.8	104.8	165.1
2.5"	cl. 2500	57.0	62.7	63.5	63.5	70.2	69.9	98.6	104.8	104.8	168.4
3"	cl. 150	88.5	77.9	81.0	92.7	101.0	101.6	120.7	127.0	127.0	136.7
3"	cl. 300	88.5	77.9	81.0	92.7	101.0	101.6	120.7	127.0	127.0	149.4
3"	cl. 400-600	88.5	77.9	81.0	92.7	101.0	101.6	120.7	127.0	127.0	149.4
3"	cl. 900	81.0	77.9	78.7	84.8	93.0	95.3	120.7	127.0	127.0	168.4
3"	cl. 1500	81.0	77.9	78.7	84.8	93.0	92.2	120.7	127.0	127.0	174.8
3"	cl. 2500	81.0	77.9	78.7	84.8	93.0	92.2	120.7	127.0	127.0	196.9
4"	cl. 150	88.5	102.3	106.4	92.7	101.0	127.0	149.4	157.2	157.2	174.8
4"	cl. 300	88.5	102.3	106.4	92.7	101.0	127.0	149.4	157.2	157.2	181.1
4"	cl. 400	88.5	102.3	102.6	92.7	101.0	120.7	149.4	157.2	157.2	177.8
4"	cl. 600	88.5	102.3	102.6	92.7	101.0	120.7	149.4	157.2	157.2	193.8
4"	cl. 900	88.5	102.3	102.6	92.7	101.0	120.7	149.4	157.2	157.2	206.5
4"	cl. 1500	88.5	102.3	97.8	92.7	101.0	117.6	149.4	157.2	157.2	209.6
4"	cl. 2500	88.5	102.3	97.8	92.7	101.0	117.6	149.4	157.2	157.2	235.0



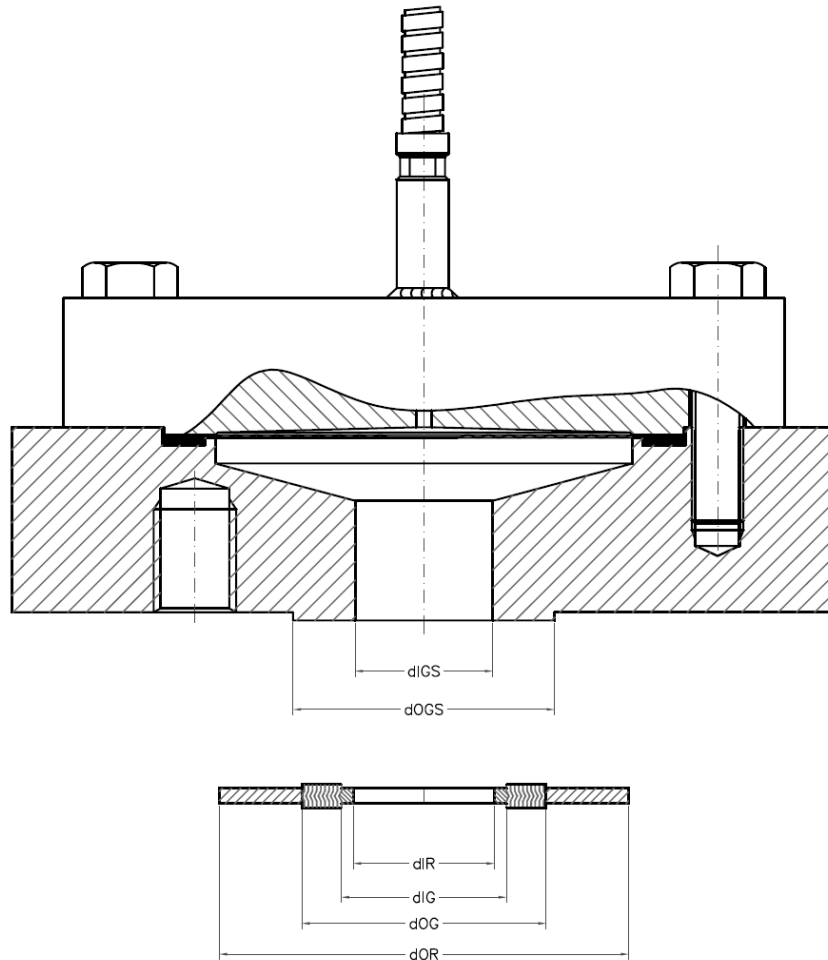
Spiral Gasket – US

flange size	flange range	d _{IR}	d _{IGS}	d _{IG}	d _{OG}	d _{OGS}	d _{OR}
0.5"	cl. 150	14.2	15.8	19.1	31.8	34.9	47.8
0.5"	cl. 300	14.2	15.8	19.1	31.8	34.9	54.1
0.5"	cl. 400-600	14.2	15.8	19.1	31.8	34.9	54.1
0.5"	cl. 900-1500	14.2	15.8	19.1	31.8	34.9	63.5
0.5"	cl. 2500	14.2	N.A.	19.1	31.8	34.9	69.9
0.75"	cl. 150	20.6	21.0	25.4	39.6	42.9	57.2
0.75"	cl. 300	20.6	21.0	25.4	39.6	42.9	66.8
0.75"	cl. 400-600	20.6	21.0	25.4	39.6	42.9	66.8
0.75"	cl. 900-1500	20.6	21.0	25.4	39.6	42.9	69.9
0.75"	cl. 2500	20.6	N.A.	25.4	39.6	42.9	76.2
1"	cl. 150	26.9	26.6	31.8	47.8	50.8	66.8
1"	cl. 300	26.9	26.6	31.8	47.8	50.8	73.2
1"	cl. 400-600	26.9	26.6	31.8	47.8	50.8	73.2
1"	cl. 900-1500	26.9	26.6	31.8	47.8	50.8	79.5
1"	cl. 2500	26.9	N.A.	31.8	47.8	50.8	85.9
1.25"	cl. 150	38.1	35.1	47.8	60.5	63.5	76.2
1.25"	cl. 300	38.1	35.1	47.8	60.5	63.5	82.6
1.25"	cl. 400-600	38.1	35.1	47.8	60.5	63.5	82.6
1.25"	cl. 900-1500	33.3	35.1	39.6	60.5	63.5	88.9
1.25"	cl. 2500	33.3	N.A.	39.6	60.5	63.5	104.9
1.5"	cl. 150	44.5	40.9	54.1	69.9	73.0	85.9
1.5"	cl. 300	44.5	40.9	54.1	69.9	73.0	95.3
1.5"	cl. 400-600	44.5	40.9	54.1	69.9	73.0	95.3
1.5"	cl. 900-1500	41.4	40.9	47.8	69.9	73.0	98.6
1.5"	cl. 2500	41.4	N.A.	47.8	69.9	73.0	117.6
2"	cl. 150	55.6	47.0	69.9	85.9	92.1	104.9
2"	cl. 300	55.6	47.0	69.9	85.9	92.1	111.3
2"	cl. 400-600	55.6	47.0	69.9	85.9	92.1	111.3
2"	cl. 900-1500	52.3	47.0	58.7	85.9	92.1	143.0
2"	cl. 2500	52.3	N.A.	58.7	85.9	92.1	146.1
2.5"	cl. 150	66.5	47.0	82.6	98.6	104.8	124.0
2.5"	cl. 300	66.5	47.0	82.6	98.6	104.8	130.3
2.5"	cl. 400-600	66.5	47.0	82.6	98.6	104.8	130.3
2.5"	cl. 900-1500	63.5	47.0	69.9	98.6	104.8	165.1
2.5"	cl. 2500	63.5	N.A.	69.9	98.6	104.8	168.4
3"	cl. 150	81.0	47.0	101.6	120.7	127.0	136.7
3"	cl. 300	81.0	47.0	101.6	120.7	127.0	149.4
3"	cl. 400-600	81.0	47.0	101.6	120.7	127.0	149.4
3"	cl. 900	78.7	47.0	95.3	120.7	127.0	168.4
3"	cl. 1500	78.7	47.0	92.2	120.7	127.0	174.8
3"	cl. 2500	78.7	N.A.	92.2	120.7	127.0	196.9
4"	cl. 150	106.4	47.0	127.0	149.4	157.2	174.8
4"	cl. 300	106.4	47.0	127.0	149.4	157.2	181.1
4"	cl. 400	102.6	47.0	120.7	149.4	157.2	177.8
4"	cl. 600	102.6	47.0	120.7	149.4	157.2	193.8
4"	cl. 900	102.6	47.0	120.7	149.4	157.2	206.5
4"	cl. 1500	97.8	47.0	117.6	149.4	157.2	209.6
4"	cl. 2500	97.8	N.A.	117.6	149.4	157.2	235.0



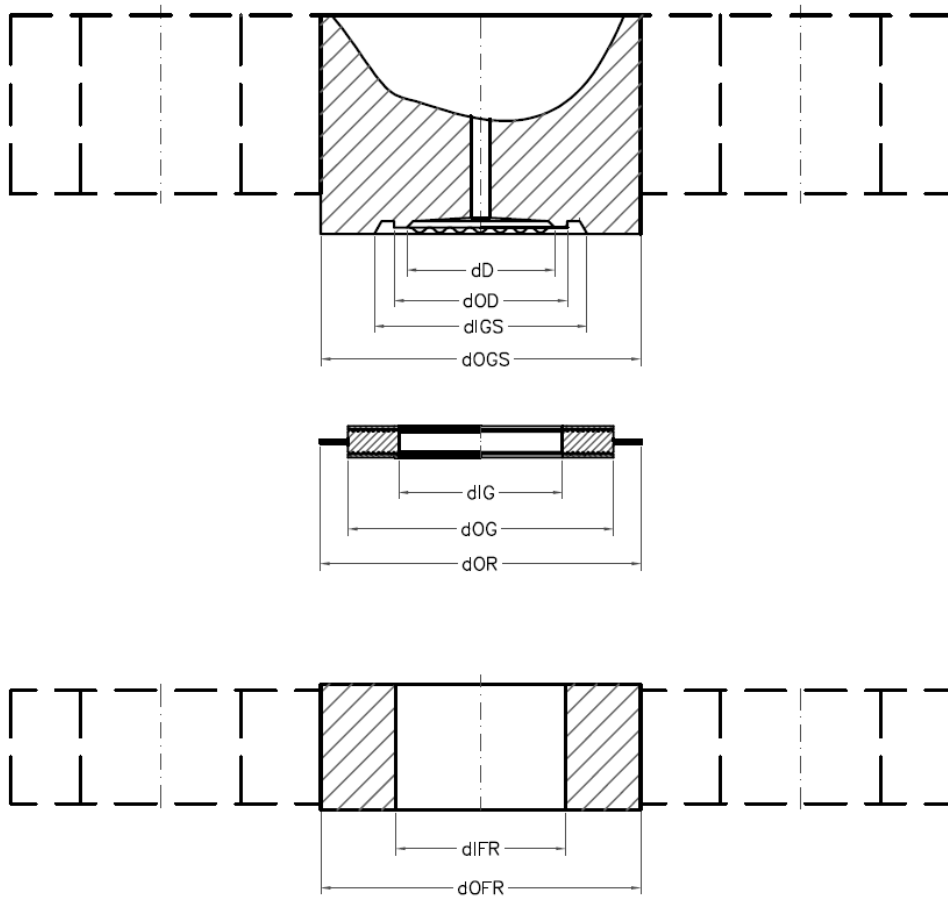
Spiral Gasket – USL

flange size	flange range	d _{IR}	d _{IGS}	d _{IG}	d _{OG}	d _{OGS}	d _{OR}
0.5"	cl. 150	14.2	15.8	19.1	31.8	34.9	47.8
0.5"	cl. 300	14.2	15.8	19.1	31.8	34.9	54.1
0.5"	cl. 400-600	14.2	15.8	19.1	31.8	34.9	54.1
0.5"	cl. 900-1500	14.2	N.A.	19.1	31.8	34.9	63.5
0.5"	cl. 2500	14.2	N.A.	19.1	31.8	34.9	69.9
0.75"	cl. 150	20.6	21.0	25.4	39.6	42.9	57.2
0.75"	cl. 300	20.6	21.0	25.4	39.6	42.9	66.8
0.75"	cl. 400-600	20.6	21.0	25.4	39.6	42.9	66.8
0.75"	cl. 900-1500	20.6	N.A.	25.4	39.6	42.9	69.9
0.75"	cl. 2500	20.6	N.A.	25.4	39.6	42.9	76.2
1"	cl. 150	26.9	26.6	31.8	47.8	50.8	66.8
1"	cl. 300	26.9	26.6	31.8	47.8	50.8	73.2
1"	cl. 400-600	26.9	26.6	31.8	47.8	50.8	73.2
1"	cl. 900-1500	26.9	N.A.	31.8	47.8	50.8	79.5
1"	cl. 2500	26.9	N.A.	31.8	47.8	50.8	85.9
1.25"	cl. 150	38.1	35.1	47.8	60.5	63.5	76.2
1.25"	cl. 300	38.1	35.1	47.8	60.5	63.5	82.6
1.25"	cl. 400-600	38.1	35.1	47.8	60.5	63.5	82.6
1.25"	cl. 900-1500	33.3	N.A.	39.6	60.5	63.5	88.9
1.25"	cl. 2500	33.3	N.A.	39.6	60.5	63.5	104.9
1.5"	cl. 150	44.5	40.9	54.1	69.9	73.0	85.9
1.5"	cl. 300	44.5	40.9	54.1	69.9	73.0	95.3
1.5"	cl. 400-600	44.5	40.9	54.1	69.9	73.0	95.3
1.5"	cl. 900-1500	41.4	N.A.	47.8	69.9	73.0	98.6
1.5"	cl. 2500	41.4	N.A.	47.8	69.9	73.0	117.6
2"	cl. 150	55.6	52.5	69.9	85.9	92.1	104.9
2"	cl. 300	55.6	52.5	69.9	85.9	92.1	111.3
2"	cl. 400-600	55.6	52.5	69.9	85.9	92.1	111.3
2"	cl. 900-1500	52.3	N.A.	58.7	85.9	92.1	143.0
2"	cl. 2500	52.3	N.A.	58.7	85.9	92.1	146.1
2.5"	cl. 150	66.5	62.7	82.6	98.6	104.8	124.0
2.5"	cl. 300	66.5	62.7	82.6	98.6	104.8	130.3
2.5"	cl. 400-600	66.5	62.7	82.6	98.6	104.8	130.3
2.5"	cl. 900-1500	63.5	N.A.	69.9	98.6	104.8	165.1
2.5"	cl. 2500	63.5	N.A.	69.9	98.6	104.8	168.4
3"	cl. 150	81.0	81.0	101.6	120.7	127.0	136.7
3"	cl. 300	81.0	81.0	101.6	120.7	127.0	149.4
3"	cl. 400-600	81.0	81.0	101.6	120.7	127.0	149.4
3"	cl. 900	78.7	N.A.	95.3	120.7	127.0	168.4
3"	cl. 1500	78.7	81.0	92.2	120.7	127.0	174.8
3"	cl. 2500	78.7	N.A.	92.2	120.7	127.0	196.9
4"	cl. 150	106.4	81.0	127.0	149.4	157.2	174.8
4"	cl. 300	106.4	81.0	127.0	149.4	157.2	181.1
4"	cl. 400	102.6	81.0	120.7	149.4	157.2	177.8
4"	cl. 600	102.6	81.0	120.7	149.4	157.2	193.8
4"	cl. 900	102.6	N.A.	120.7	149.4	157.2	206.5
4"	cl. 1500	97.8	81.0	117.6	149.4	157.2	209.6
4"	cl. 2500	97.8	N.A.	117.6	149.4	157.2	235.0



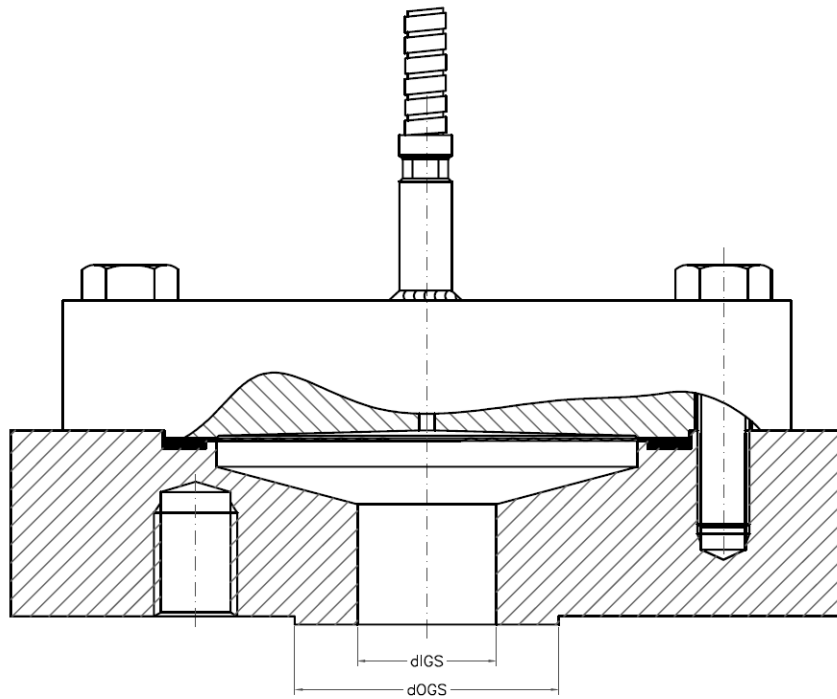
Grooved Gasket – BF

flange size	flange range	d _C	d _{IFR}	d _D	d _{IGS}	d _{IG}	d _{OG}	d _{OFR}	d _{OGS}	d _{OR}
1"	cl. 150	23.5	26.6	27.5	31.8	32.0	47.8	50.8	50.8	66.8
1"	cl. 300	23.5	26.6	27.5	31.8	32.0	47.8	50.8	50.8	73.2
1"	cl. 400-600	23.5	26.6	27.5	31.8	32.0	47.8	50.8	50.8	73.2
1"	cl. 900-1500	23.5	26.6	27.5	31.8	32.0	47.8	50.8	50.8	79.5
1"	cl. 2500	23.5	26.6	27.5	31.8	32.0	47.8	50.8	50.8	85.9
1.25"	cl. 150	32.0	35.1	35.7	41.5	40.0	60.5	63.5	63.5	76.2
1.25"	cl. 300	32.0	35.1	35.7	41.5	40.0	60.5	63.5	63.5	82.6
1.25"	cl. 400-600	32.0	35.1	35.7	41.5	40.0	60.5	63.5	63.5	82.6
1.25"	cl. 900-1500	32.0	35.1	35.7	39.8	40.0	60.5	63.5	63.5	88.9
1.25"	cl. 2500	32.0	35.1	35.7	39.8	40.0	60.5	63.5	63.5	104.9
1.5"	cl. 150	44.0	40.9	47.3	52.4	45.0	69.9	73.0	73.0	85.9
1.5"	cl. 300	44.0	40.9	47.3	52.4	45.0	69.9	73.0	73.0	95.3
1.5"	cl. 400-600	44.0	40.9	47.3	52.4	45.0	69.9	73.0	73.0	95.3
1.5"	cl. 900-1500	32.0	40.9	35.7	41.5	45.0	69.9	73.0	73.0	98.6
1.5"	cl. 2500	32.0	40.9	35.7	41.5	45.0	69.9	73.0	73.0	117.6
2"	cl. 150	57.0	52.5	63.5	70.2	60.0	85.9	92.1	92.1	104.9
2"	cl. 300	57.0	52.5	63.5	70.2	60.0	85.9	92.1	92.1	111.3
2"	cl. 400-600	57.0	52.5	63.5	70.2	60.0	85.9	92.1	92.1	111.3
2"	cl. 900-1500	44.0	52.5	47.3	55.4	60.0	85.9	92.1	92.1	143.0
2"	cl. 2500	44.0	52.5	47.3	55.4	60.0	85.9	92.1	92.1	146.1
2.5"	cl. 150	57.0	62.7	63.5	70.2	70.0	98.6	104.8	104.8	124.0
2.5"	cl. 300	57.0	62.7	63.5	70.2	70.0	98.6	104.8	104.8	130.3
2.5"	cl. 400-600	57.0	62.7	63.5	70.2	70.0	98.6	104.8	104.8	130.3
2.5"	cl. 900-1500	57.0	62.7	63.5	70.2	70.0	98.6	104.8	104.8	165.1
2.5"	cl. 2500	57.0	62.7	63.5	70.2	70.0	98.6	104.8	104.8	168.4
3"	cl. 150	88.5	77.9	92.7	101.0	85.0	120.7	127.0	127.0	136.7
3"	cl. 300	88.5	77.9	92.7	101.0	85.0	120.7	127.0	127.0	149.4
3"	cl. 400-600	88.5	77.9	92.7	101.0	85.0	120.7	127.0	127.0	149.4
3"	cl. 900	81.0	77.9	84.8	93.0	85.0	120.7	127.0	127.0	168.4
3"	cl. 1500	81.0	77.9	84.8	93.0	85.0	120.7	127.0	127.0	174.8
3"	cl. 2500	81.0	77.9	84.8	93.0	85.0	120.7	127.0	127.0	196.9
4"	cl. 150	88.5	102.3	92.7	101.0	100.0	149.4	157.2	157.2	174.8
4"	cl. 300	88.5	102.3	92.7	101.0	100.0	149.4	157.2	157.2	181.1
4"	cl. 400	88.5	102.3	92.7	101.0	100.0	149.4	157.2	157.2	177.8
4"	cl. 600	88.5	102.3	92.7	101.0	100.0	149.4	157.2	157.2	193.8
4"	cl. 900	88.5	102.3	92.7	101.0	100.0	149.4	157.2	157.2	206.5
4"	cl. 1500	88.5	102.3	92.7	101.0	100.0	149.4	157.2	157.2	209.6
4"	cl. 2500	88.5	102.3	92.7	101.0	100.0	149.4	157.2	157.2	235.0



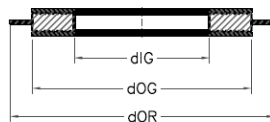
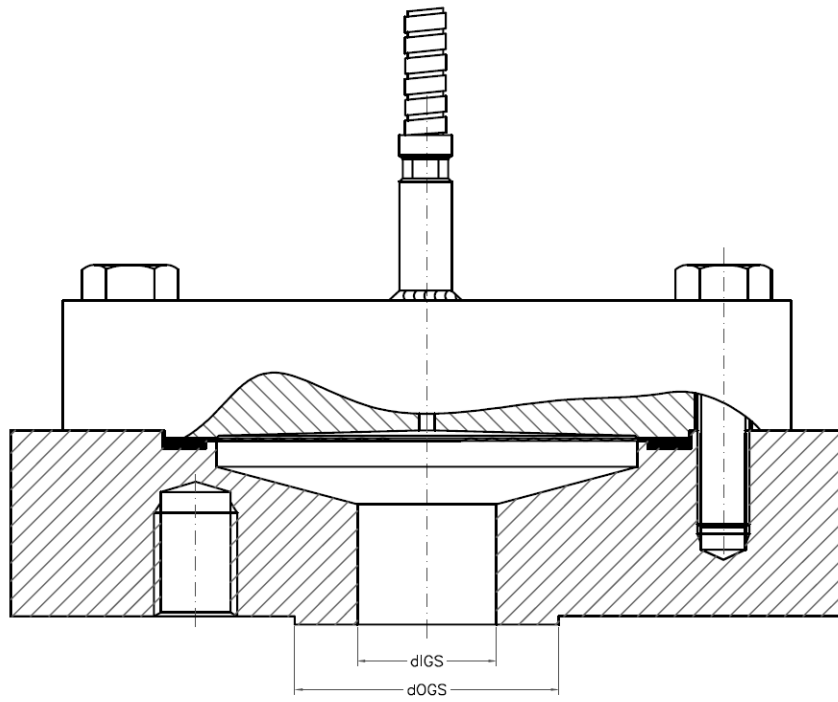
Grooved Gasket – US

flange size	flange range	d _{IGS}	d _{IG}	d _{OG}	d _{OGS}	d _{OR}
0.5"	cl. 150	15.8	20.0	31.8	34.9	47.8
0.5"	cl. 300	15.8	20.0	31.8	34.9	54.1
0.5"	cl. 400-600	15.8	20.0	31.8	34.9	54.1
0.5"	cl. 900-1500	15.8	20.0	31.8	34.9	63.5
0.5"	cl. 2500	N.A.	20.0	31.8	34.9	69.9
0.75"	cl. 150	21.0	25.0	39.6	42.9	57.2
0.75"	cl. 300	21.0	25.0	39.6	42.9	66.8
0.75"	cl. 400-600	21.0	25.0	39.6	42.9	66.8
0.75"	cl. 900-1500	21.0	25.0	39.6	42.9	69.9
0.75"	cl. 2500	N.A.	25.0	39.6	42.9	76.2
1"	cl. 150	26.6	32.0	47.8	50.8	66.8
1"	cl. 300	26.6	32.0	47.8	50.8	73.2
1"	cl. 400-600	26.6	32.0	47.8	50.8	73.2
1"	cl. 900-1500	26.6	32.0	47.8	50.8	79.5
1"	cl. 2500	N.A.	32.0	47.8	50.8	85.9
1.25"	cl. 150	35.1	40.0	60.5	63.5	76.2
1.25"	cl. 300	35.1	40.0	60.5	63.5	82.6
1.25"	cl. 400-600	35.1	40.0	60.5	63.5	82.6
1.25"	cl. 900-1500	35.1	40.0	60.5	63.5	88.9
1.25"	cl. 2500	N.A.	40.0	60.5	63.5	104.9
1.5"	cl. 150	40.9	45.0	69.9	73.0	85.9
1.5"	cl. 300	40.9	45.0	69.9	73.0	95.3
1.5"	cl. 400-600	40.9	45.0	69.9	73.0	95.3
1.5"	cl. 900-1500	40.9	45.0	69.9	73.0	98.6
1.5"	cl. 2500	N.A.	45.0	69.9	73.0	117.6
2"	cl. 150	47.0	60.0	85.9	92.1	104.9
2"	cl. 300	47.0	60.0	85.9	92.1	111.3
2"	cl. 400-600	47.0	60.0	85.9	92.1	111.3
2"	cl. 900-1500	47.0	60.0	85.9	92.1	143.0
2"	cl. 2500	N.A.	60.0	85.9	92.1	146.1
2.5"	cl. 150	47.0	70.0	98.6	104.8	124.0
2.5"	cl. 300	47.0	70.0	98.6	104.8	130.3
2.5"	cl. 400-600	47.0	70.0	98.6	104.8	130.3
2.5"	cl. 900-1500	47.0	70.0	98.6	104.8	165.1
2.5"	cl. 2500	N.A.	70.0	98.6	104.8	168.4
3"	cl. 150	47.0	85.0	120.7	127.0	136.7
3"	cl. 300	47.0	85.0	120.7	127.0	149.4
3"	cl. 400-600	47.0	85.0	120.7	127.0	149.4
3"	cl. 900	47.0	85.0	120.7	127.0	168.4
3"	cl. 1500	47.0	85.0	120.7	127.0	174.8
3"	cl. 2500	N.A.	85.0	120.7	127.0	196.9
4"	cl. 150	47.0	100.0	149.4	157.2	174.8
4"	cl. 300	47.0	100.0	149.4	157.2	181.1
4"	cl. 400	47.0	100.0	149.4	157.2	177.8
4"	cl. 600	47.0	100.0	149.4	157.2	193.8
4"	cl. 900	47.0	100.0	149.4	157.2	206.5
4"	cl. 1500	47.0	100.0	149.4	157.2	209.6
4"	cl. 2500	N.A.	100.0	149.4	157.2	235.0



Grooved Gasket – USL

flange size	flange range	d _{IGS}	d _{IG}	d _{OG}	d _{OGS}	d _{OR}
0.5"	cl. 150	15.8	20.0	31.8	34.9	47.8
0.5"	cl. 300	15.8	20.0	31.8	34.9	54.1
0.5"	cl. 400-600	15.8	20.0	31.8	34.9	54.1
0.5"	cl. 900-1500	N.A.	20.0	31.8	34.9	63.5
0.5"	cl. 2500	N.A.	20.0	31.8	34.9	69.9
0.75"	cl. 150	21.0	25.0	39.6	42.9	57.2
0.75"	cl. 300	21.0	25.0	39.6	42.9	66.8
0.75"	cl. 400-600	21.0	25.0	39.6	42.9	66.8
0.75"	cl. 900-1500	N.A.	25.0	39.6	42.9	69.9
0.75"	cl. 2500	N.A.	25.0	39.6	42.9	76.2
1"	cl. 150	26.6	32.0	47.8	50.8	66.8
1"	cl. 300	26.6	32.0	47.8	50.8	73.2
1"	cl. 400-600	26.6	32.0	47.8	50.8	73.2
1"	cl. 900-1500	N.A.	32.0	47.8	50.8	79.5
1"	cl. 2500	N.A.	32.0	47.8	50.8	85.9
1.25"	cl. 150	35.1	40.0	60.5	63.5	76.2
1.25"	cl. 300	35.1	40.0	60.5	63.5	82.6
1.25"	cl. 400-600	35.1	40.0	60.5	63.5	82.6
1.25"	cl. 900-1500	N.A.	40.0	60.5	63.5	88.9
1.25"	cl. 2500	N.A.	40.0	60.5	63.5	104.9
1.5"	cl. 150	40.9	45.0	69.9	73.0	85.9
1.5"	cl. 300	40.9	45.0	69.9	73.0	95.3
1.5"	cl. 400-600	40.9	45.0	69.9	73.0	95.3
1.5"	cl. 900-1500	N.A.	45.0	69.9	73.0	98.6
1.5"	cl. 2500	N.A.	45.0	69.9	73.0	117.6
2"	cl. 150	52.5	60.0	85.9	92.1	104.9
2"	cl. 300	52.5	60.0	85.9	92.1	111.3
2"	cl. 400-600	52.5	60.0	85.9	92.1	111.3
2"	cl. 900-1500	N.A.	60.0	85.9	92.1	143.0
2"	cl. 2500	N.A.	60.0	85.9	92.1	146.1
2.5"	cl. 150	62.7	70.0	98.6	104.8	124.0
2.5"	cl. 300	62.7	70.0	98.6	104.8	130.3
2.5"	cl. 400-600	62.7	70.0	98.6	104.8	130.3
2.5"	cl. 900-1500	N.A.	70.0	98.6	104.8	165.1
2.5"	cl. 2500	N.A.	70.0	98.6	104.8	168.4
3"	cl. 150	81.0	85.0	120.7	127.0	136.7
3"	cl. 300	81.0	85.0	120.7	127.0	149.4
3"	cl. 400-600	81.0	85.0	120.7	127.0	149.4
3"	cl. 900	N.A.	85.0	120.7	127.0	168.4
3"	cl. 1500	81.0	85.0	120.7	127.0	174.8
3"	cl. 2500	N.A.	85.0	120.7	127.0	196.9
4"	cl. 150	81.0	100.0	149.4	157.2	174.8
4"	cl. 300	81.0	100.0	149.4	157.2	181.1
4"	cl. 400	81.0	100.0	149.4	157.2	177.8
4"	cl. 600	81.0	100.0	149.4	157.2	193.8
4"	cl. 900	N.A.	100.0	149.4	157.2	206.5
4"	cl. 1500	81.0	100.0	149.4	157.2	209.6
4"	cl. 2500	N.A.	100.0	149.4	157.2	235.0





Holland – United Kingdom – Romania – India – Thailand – Dubai – USA

To our knowledge, the information contained herein is accurate as of the date of this document. However neither Badotherm, nor its affiliates makes any warranty, express or limited, or accepts any liability in connection with this information or its use. This information is for technical skilled persons at their own discretion and risk and does not relate to the use of this product in combination with any other product. The user alone finally determines suitability of any information or material in contemplated use, the manner of use and whether any patents are infringed. This information gives typical properties only.

Badotherm reserves the right to make changes to the specifications and materials without prior notice. The latest version of the datasheet can be found on www.badotherm.com.

© 2001 Badotherm, all rights reserved. Trademarks and/or other products referenced herein are either trademarks or registered trademarks of Badotherm.