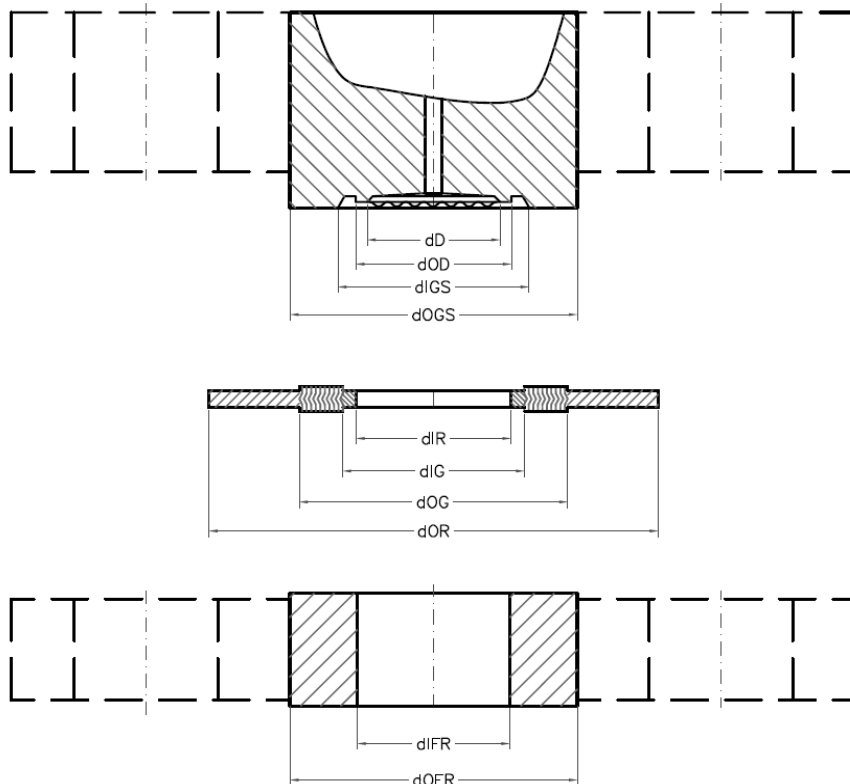


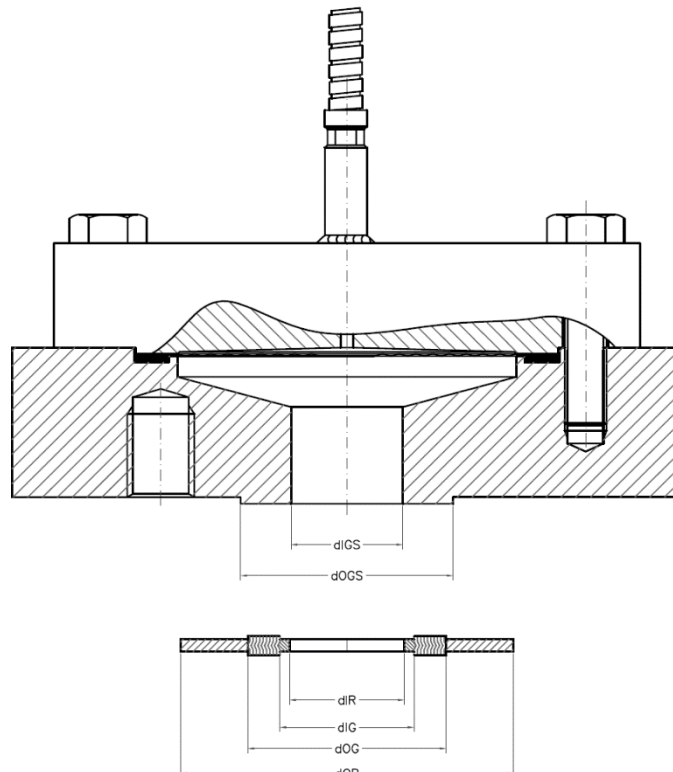
Spiral Gasket – BF

flange size	flange range	d_{IFR}	d_C	d_{IR}	d_D	d_{IGS}	d_{IG}	d_{OG}	d_{OFR}	d_{OGS}	d_{OR}
DN15	PN2.5-6	17.3	20.0	N.A.	22.8	27.3	N.A.	N.A.	40	40.0	N.A.
DN15	PN10-40	17.3	20.0	23	22.8	27.3	29.0	39.0	45	45.0	51.0
DN15	PN63-100	17.3	20.0	23	22.8	27.3	29.0	39.0	45	45.0	61.0
DN20	PN2.5-6	21.7	23.5	N.A.	27.5	33.8	N.A.	N.A.	50	50.0	N.A.
DN20	PN10-40	21.7	23.5	28	27.5	33.8	34.0	46.0	58	58.0	61.0
DN20	PN63-100	21.7	23.5	28	27.5	33.8	34.0	46.0	58	58.0	N.A.
DN25	PN2.5-6	28.5	32.0	N.A.	35.7	41.0	N.A.	N.A.	60	60.0	N.A.
DN25	PN10-40	28.5	32.0	35	35.7	41.0	41.0	53.0	68	68.0	71.0
DN25	PN63-100	28.5	32.0	35	35.7	41.0	41.0	N.A.	68	68.0	82.0
DN32	PN2.5-6	36.6	32.0	N.A.	35.7	41.5	N.A.	N.A.	70	70.0	N.A.
DN32	PN10-40	36.6	32.0	43	35.7	41.5	49.0	61.0	78	78.0	82.0
DN32	PN63-100	36.6	32.0	43	35.7	41.5	49.0	N.A.	78	78.0	N.A.
DN40	PN2.5-6	42.5	44.0	N.A.	47.3	55.4	N.A.	N.A.	80	80.0	N.A.
DN40	PN10-40	42.5	44.0	50	47.3	55.4	56.0	68.0	88	88.0	92.0
DN40	PN63-100	42.5	44.0	50	47.3	55.4	56.0	68.0	88	88.0	103.0
DN50	PN2.5-6	53.9	57.0	N.A.	63.5	70.2	N.A.	N.A.	90	90.0	N.A.
DN50	PN10-16	53.9	57.0	61	63.5	70.2	70.0	86.0	102	102.0	107.0
DN50	PN25-40	53.9	57.0	61	63.5	70.2	70.0	86.0	102	102.0	107.0
DN50	PN63	53.9	57.0	61	63.5	70.2	70.0	86.0	102	102.0	113.0
DN50	PN100	53.9	57.0	61	63.5	70.2	70.0	86.0	102	102.0	119.0
DN80	PN2.5-6	80.9	81.0	N.A.	84.8	93.0	N.A.	N.A.	128	128.0	N.A.
DN80	PN10-16	80.9	81.0	90	84.8	93.0	99.0	115.0	138	138.0	142.0
DN80	PN25-40	80.9	81.0	90	84.8	93.0	99.0	115.0	138	138.0	142.0
DN80	PN63	80.9	81.0	90	84.8	93.0	99.0	119.0	138	138.0	148.0
DN80	PN100	80.9	81.0	90	84.8	93.0	99.0	119.0	138	138.0	154.0
DN100	PN2.5-6	104.3	88.5	N.A.	92.7	101.0	N.A.	N.A.	148	148.0	N.A.
DN100	PN10-16	104.3	88.5	115	92.7	101.0	127.0	143.0	158	158.0	162.0
DN100	PN25-40	104.3	88.5	115	92.7	101.0	127.0	143.0	162	162.0	168.0
DN100	PN63	104.3	88.5	115	92.7	101.0	127.0	147.0	162	162.0	174.0
DN100	PN100	104.3	88.5	115	92.7	101.0	127.0	147.0	162	162.0	180.0



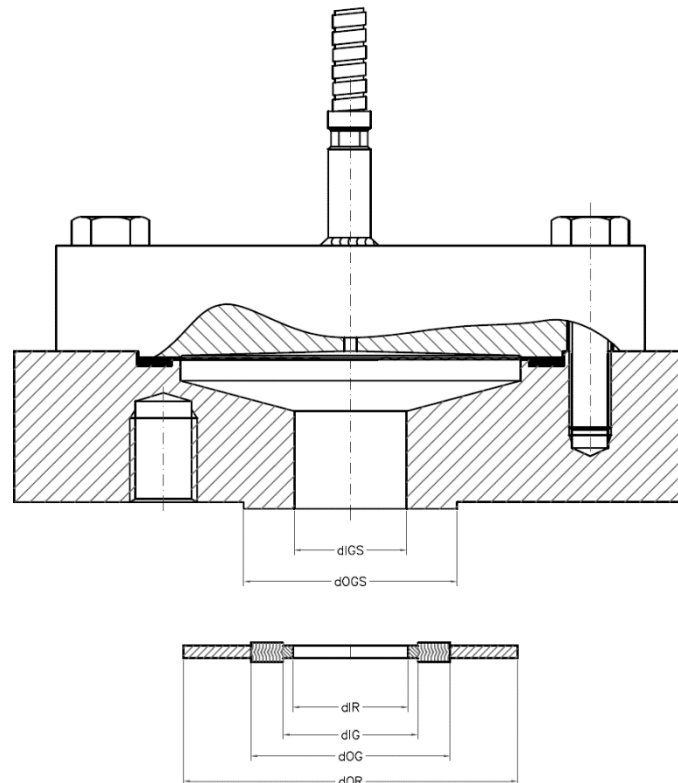
Spiral Gasket – US

flange size	flange range	d _{IR}	d _{IGS}	d _{IG}	d _{OG}	d _{OGS}	d _{OR}
DN15	PN2.5-6	N.A.	17.3	N.A.	N.A.	40.0	N.A.
DN15	PN10-40	23.0	17.3	29.0	39.0	45.0	51.0
DN15	PN63-100	23.0	17.3	29.0	39.0	45.0	61.0
DN20	PN2.5-6	N.A.	22.3	N.A.	N.A.	50.0	N.A.
DN20	PN10-40	28.0	22.3	34.0	46.0	58.0	61.0
DN20	PN63-100	28.0	21.7	34.0	N.A.	58.0	N.A.
DN25	PN2.5-6	N.A.	28.5	N.A.	N.A.	60.0	N.A.
DN25	PN10-40	35.0	28.5	41.0	53.0	68.0	71.0
DN25	PN63-100	35.0	28.5	41.0	53.0	68.0	82.0
DN32	PN2.5-6	N.A.	37.2	N.A.	N.A.	70.0	N.A.
DN32	PN10-40	43.0	37.2	49.0	61.0	78.0	82.0
DN32	PN63-100	43.0	36.6	49.0	N.A.	78.0	N.A.
DN40	PN2.5-6	N.A.	43.1	N.A.	N.A.	80.0	N.A.
DN40	PN10-40	50.0	43.1	56.0	68.0	88.0	92.0
DN40	PN63-100	50.0	42.5	56.0	68.0	88.0	103.0
DN50	PN2.5-6	N.A.	47.0	N.A.	N.A.	90.0	N.A.
DN50	PN10-16	61.0	47.0	70.0	86.0	102.0	107.0
DN50	PN25-40	61.0	47.0	70.0	86.0	102.0	107.0
DN50	PN63	61.0	47.0	70.0	86.0	102.0	113.0
DN50	PN100	61.0	47.0	70.0	86.0	102.0	119.0
DN80	PN2.5-6	N.A.	47.0	N.A.	N.A.	128.0	N.A.
DN80	PN10-16	90.0	47.0	99.0	115.0	138.0	142.0
DN80	PN25-40	90.0	47.0	99.0	115.0	138.0	142.0
DN80	PN63	90.0	47.0	99.0	119.0	138.0	148.0
DN80	PN100	90.0	47.0	99.0	119.0	138.0	154.0
DN100	PN2.5-6	N.A.	47.0	N.A.	N.A.	148.0	N.A.
DN100	PN10-16	115.0	47.0	127.0	143.0	158.0	162.0
DN100	PN25-40	115.0	47.0	127.0	143.0	162.0	168.0
DN100	PN63	115.0	47.0	127.0	147.0	162.0	174.0
DN100	PN100	115.0	47.0	127.0	147.0	162.0	180.0



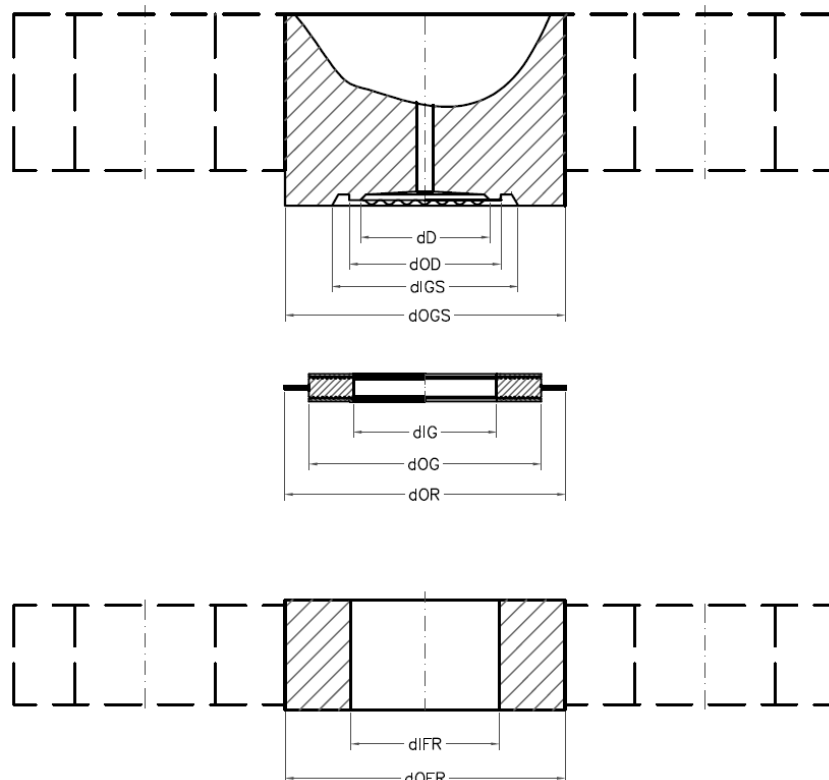
Spiral Gasket – USL

flange size	flange range	d _{IR}	d _{IGS}	d _{IG}	d _{OG}	d _{OGS}	d _{OR}
DN15	PN2.5-6	N.A.	17.3	N.A.	N.A.	40.0	N.A.
DN15	PN10-40	23.0	17.3	29.0	39.0	45.0	51.0
DN15	PN63-100	23.0	17.3	29.0	39.0	45.0	61.0
DN20	PN2.5-6	N.A.	22.3	N.A.	N.A.	50.0	N.A.
DN20	PN10-40	28.0	22.3	34.0	46.0	58.0	61.0
DN20	PN63-100	28.0	21.7	34.0	N.A.	58.0	N.A.
DN25	PN2.5-6	N.A.	28.5	N.A.	N.A.	60.0	N.A.
DN25	PN10-40	35.0	28.5	41.0	53.0	68.0	71.0
DN25	PN63-100	35.0	28.5	41.0	53.0	68.0	82.0
DN32	PN2.5-6	N.A.	37.2	N.A.	N.A.	70.0	N.A.
DN32	PN10-40	43.0	37.2	49.0	61.0	78.0	82.0
DN32	PN63-100	43.0	36.6	49.0	N.A.	78.0	N.A.
DN40	PN2.5-6	N.A.	43.1	N.A.	N.A.	80.0	N.A.
DN40	PN10-40	50.0	43.1	56.0	68.0	88.0	92.0
DN40	PN63-100	50.0	42.5	56.0	68.0	88.0	103.0
DN50	PN2.5-6	N.A.	54.5	N.A.	N.A.	90.0	N.A.
DN50	PN10-16	61.0	54.5	70.0	86.0	102.0	107.0
DN50	PN25-40	61.0	54.5	70.0	86.0	102.0	107.0
DN50	PN63	61.0	54.5	70.0	86.0	102.0	113.0
DN50	PN100	61.0	53.9	70.0	86.0	102.0	119.0
DN80	PN2.5-6	N.A.	81.0	N.A.	N.A.	128.0	N.A.
DN80	PN10-16	90.0	81.0	99.0	115.0	138.0	142.0
DN80	PN25-40	90.0	81.0	99.0	115.0	138.0	142.0
DN80	PN63	90.0	81.0	99.0	119.0	138.0	148.0
DN80	PN100	90.0	81.0	99.0	119.0	138.0	154.0
DN100	PN2.5-6	N.A.	81.0	N.A.	N.A.	148.0	N.A.
DN100	PN10-16	115.0	81.0	127.0	143.0	158.0	162.0
DN100	PN25-40	115.0	81.0	127.0	143.0	162.0	168.0
DN100	PN63	115.0	81.0	127.0	147.0	162.0	174.0
DN100	PN100	115.0	81.0	127.0	147.0	162.0	180.0



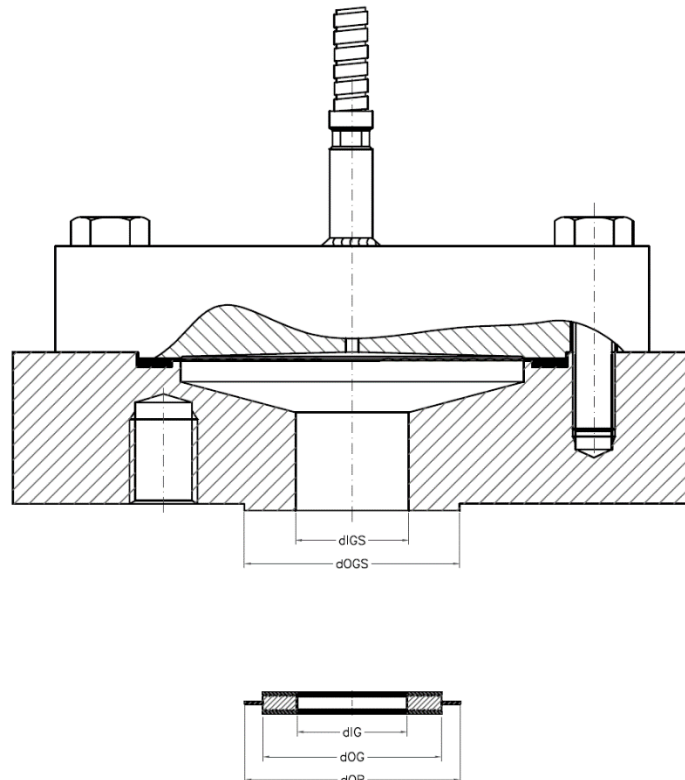
Grooved Gasket – BF

flange size	flange range	d _{IFR}	d _c	d _D	d _{IGS}	d _{IG}	d _{OG}	d _{OFR}	d _{OGS}	d _{OR}
DN15	PN2.5-6	17.3	20.0	22.8	27.3	N.A.	N.A.	40	40.0	N.A.
DN15	PN10-40	17.3	20.0	22.8	27.3	26.0	39.0	45	45.0	51.0
DN15	PN63-100	17.3	20.0	22.8	27.3	26.0	39.0	45	45.0	61.0
DN20	PN2.5-6	21.7	23.5	27.5	33.8	N.A.	N.A.	50	50.0	N.A.
DN20	PN10-40	21.7	23.5	27.5	33.8	31.0	46.0	58	58.0	61.0
DN20	PN63-100	21.7	23.5	27.5	33.8	31.0	N.A.	58	58.0	N.A.
DN25	PN2.5-6	28.5	32.0	35.7	41.0	N.A.	N.A.	60	60.0	N.A.
DN25	PN10-40	28.5	32.0	35.7	41.0	36.0	53.0	68	68.0	71.0
DN25	PN63-100	28.5	32.0	35.7	41.0	36.0	53.0	68	68.0	82.0
DN32	PN2.5-6	36.6	32.0	35.7	41.5	N.A.	N.A.	70	70.0	N.A.
DN32	PN10-40	36.6	32.0	35.7	41.5	46.0	61.0	78	78.0	82.0
DN32	PN63-100	36.6	32.0	35.7	41.5	46.0	N.A.	78	78.0	N.A.
DN40	PN2.5-6	42.5	44.0	47.3	55.4	N.A.	N.A.	80	80.0	N.A.
DN40	PN10-40	42.5	44.0	47.3	55.4	53.0	68.0	88	88.0	92.0
DN40	PN63-100	42.5	44.0	47.3	55.4	53.0	68.0	88	88.0	103.0
DN50	PN2.5-6	53.9	57.0	63.5	70.2	N.A.	N.A.	90	90.0	N.A.
DN50	PN10-16	53.9	57.0	63.5	70.2	65.0	86.0	102	102.0	107.0
DN50	PN25-40	53.9	57.0	63.5	70.2	65.0	86.0	102	102.0	107.0
DN50	PN63	53.9	57.0	63.5	70.2	65.0	86.0	102	102.0	113.0
DN50	PN100	53.9	57.0	63.5	70.2	65.0	86.0	102	102.0	119.0
DN80	PN2.5-6	80.9	81.0	84.8	93.0	N.A.	N.A.	128	128.0	N.A.
DN80	PN10-16	80.9	81.0	84.8	93.0	95.0	115.0	138	138.0	142.0
DN80	PN25-40	80.9	81.0	84.8	93.0	95.0	115.0	138	138.0	142.0
DN80	PN63	80.9	81.0	84.8	93.0	95.0	119.0	138	138.0	148.0
DN80	PN100	80.9	81.0	84.8	93.0	95.0	119.0	138	138.0	154.0
DN100	PN2.5-6	104.3	88.5	92.7	101.0	N.A.	N.A.	148	148.0	N.A.
DN100	PN10-16	104.3	88.5	92.7	101.0	118.0	143.0	158	158.0	162.0
DN100	PN25-40	104.3	88.5	92.7	101.0	118.0	143.0	162	162.0	168.0
DN100	PN63	104.3	88.5	92.7	101.0	118.0	147.0	162	162.0	174.0
DN100	PN100	104.3	88.5	92.7	101.0	118.0	147.0	162	162.0	180.0



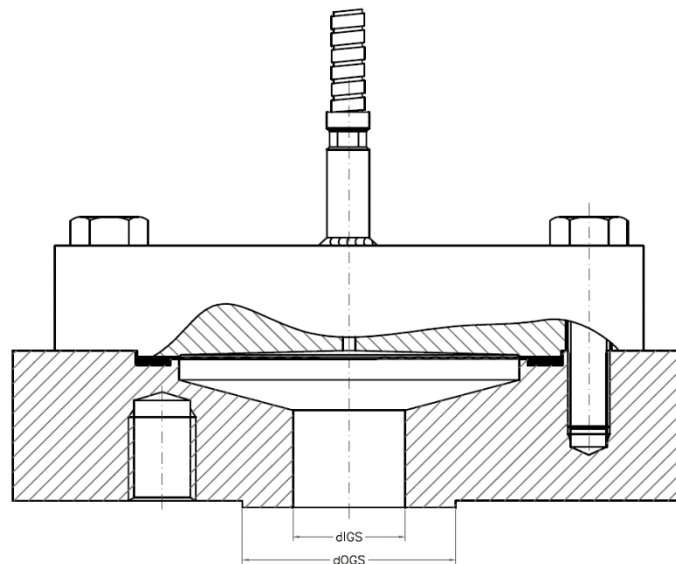
Grooved Gasket – US

flange size	flange range	d _{IGS}	d _{IG}	d _{OG}	d _{OGS}	d _{OR}
DN15	PN2.5-6	17.3	N.A.	N.A.	40.0	N.A.
DN15	PN10-40	17.3	26.0	39.0	45.0	51.0
DN15	PN63-100	17.3	26.0	39.0	45.0	61.0
DN20	PN2.5-6	22.3	N.A.	N.A.	50.0	N.A.
DN20	PN10-40	22.3	31.0	46.0	58.0	61.0
DN20	PN63-100	21.7	31.0	N.A.	58.0	N.A.
DN25	PN2.5-6	28.5	N.A.	N.A.	60.0	N.A.
DN25	PN10-40	28.5	36.0	53.0	68.0	71.0
DN25	PN63-100	28.5	36.0	53.0	68.0	82.0
DN32	PN2.5-6	37.2	N.A.	N.A.	70.0	N.A.
DN32	PN10-40	37.2	46.0	61.0	78.0	82.0
DN32	PN63-100	36.6	46.0	N.A.	78.0	N.A.
DN40	PN2.5-6	43.1	N.A.	N.A.	80.0	N.A.
DN40	PN10-40	43.1	53.0	68.0	88.0	92.0
DN40	PN63-100	42.5	53.0	68.0	88.0	103.0
DN50	PN2.5-6	47.0	N.A.	N.A.	90.0	N.A.
DN50	PN10-16	47.0	65.0	86.0	102.0	107.0
DN50	PN25-40	47.0	65.0	86.0	102.0	107.0
DN50	PN63	47.0	65.0	86.0	102.0	113.0
DN50	PN100	47.0	65.0	86.0	102.0	119.0
DN80	PN2.5-6	47.0	N.A.	N.A.	128.0	N.A.
DN80	PN10-16	47.0	95.0	115.0	138.0	142.0
DN80	PN25-40	47.0	95.0	115.0	138.0	142.0
DN80	PN63	47.0	95.0	119.0	138.0	148.0
DN80	PN100	47.0	95.0	119.0	138.0	154.0
DN100	PN2.5-6	47.0	N.A.	N.A.	148.0	N.A.
DN100	PN10-16	47.0	118.0	143.0	158.0	162.0
DN100	PN25-40	47.0	118.0	143.0	162.0	168.0
DN100	PN63	47.0	118.0	147.0	162.0	174.0
DN100	PN100	47.0	118.0	147.0	162.0	180.0



Grooved Gasket – USL

flange size	flange range	d _{IGS}	d _{IG}	d _{OG}	d _{OGS}	d _{OR}
DN15	PN2.5-6	17.3	N.A.	N.A.	40.0	N.A.
DN15	PN10-40	17.3	26.0	39.0	45.0	51.0
DN15	PN63-100	17.3	26.0	39.0	45.0	61.0
DN20	PN2.5-6	22.3	N.A.	N.A.	50.0	N.A.
DN20	PN10-40	22.3	31.0	46.0	58.0	61.0
DN20	PN63-100	21.7	31.0	N.A.	58.0	N.A.
DN25	PN2.5-6	28.5	N.A.	N.A.	60.0	N.A.
DN25	PN10-40	28.5	36.0	53.0	68.0	71.0
DN25	PN63-100	28.5	36.0	53.0	68.0	82.0
DN32	PN2.5-6	37.2	N.A.	N.A.	70.0	N.A.
DN32	PN10-40	37.2	46.0	61.0	78.0	82.0
DN32	PN63-100	36.6	46.0	N.A.	78.0	N.A.
DN40	PN2.5-6	43.1	N.A.	N.A.	80.0	N.A.
DN40	PN10-40	43.1	53.0	68.0	88.0	92.0
DN40	PN63-100	42.5	53.0	68.0	88.0	103.0
DN50	PN2.5-6	54.5	N.A.	N.A.	90.0	N.A.
DN50	PN10-16	54.5	65.0	86.0	102.0	107.0
DN50	PN25-40	54.5	65.0	86.0	102.0	107.0
DN50	PN63	54.5	65.0	86.0	102.0	113.0
DN50	PN100	53.9	65.0	86.0	102.0	119.0
DN80	PN2.5-6	81.0	N.A.	N.A.	128.0	N.A.
DN80	PN10-16	81.0	95.0	115.0	138.0	142.0
DN80	PN25-40	81.0	95.0	115.0	138.0	142.0
DN80	PN63	81.0	95.0	119.0	138.0	148.0
DN80	PN100	81.0	95.0	119.0	138.0	154.0
DN100	PN2.5-6	81.0	N.A.	N.A.	148.0	N.A.
DN100	PN10-16	81.0	118.0	143.0	158.0	162.0
DN100	PN25-40	81.0	118.0	143.0	162.0	168.0
DN100	PN63	81.0	118.0	147.0	162.0	174.0
DN100	PN100	81.0	118.0	147.0	162.0	180.0





Holland – United Kingdom – Romania – India – Thailand – Dubai – USA

To our knowledge, the information contained herein is accurate as of the date of this document. However neither Badotherm, nor its affiliates makes any warranty, express or limited, or accepts any liability in connection with this information or its use. This information is for technical skilled persons at their own discretion and risk and does not relate to the use of this product in combination with any other product. The user alone finally determines suitability of any information or material in contemplated use, the manner of use and whether any patents are infringed. This information gives typical properties only.

Badotherm reserves the right to make changes to the specifications and materials without prior notice. The latest version of the datasheet can be found on www.badotherm.com.

© 2001 Badotherm, all rights reserved. Trademarks and/or other products referenced herein are either trademarks or registered trademarks of Badotherm.